



Bauer
LADDERS



USA MADE · PROFESSIONAL GRADE



ABOUT BAUER

Since 1917, Bauer Corporation has been the leading U.S. manufacturer of higher performance work access equipment. We are committed to delivering the best product and service for assisting professionals to reach work more safely and efficiently. Our products, made by skilled craftsmen in Wooster, Ohio, are designed to be used several times a day, every day, as a tool required for the job. Therefore, our ladders, planks, and stages are built different, better!

CATV, Utility, and Telecom Ladders

FiberLite Next Gen	1
FiberLite	2
Series 313	3
Series 311	3
Series 361	4
Series 330 & 331	5
Series 336	5
Series 339	6
Series 333	6

Step and Platform Ladders

Series 350	7
Series 308	7
Series 304	7
Series 352	8
Series 354	8
Series 351	9
Series 201	10
Series 200	10
Series 204	10

Extension Ladders

Series 315	11
Series 310	11
Series 221	11
Series 314	12

Sawhorses and Work Platforms

Series 200	13
20900 Fold-N-Go	13

Aluminum Planks and Stages

Planks	14-15
--------------	-------

Accessories

Accessories	16-17
-------------------	-------

WHAT MAKES BAUER DIFFERENT, BETTER

Through better design and craftsmanship, Bauer stands above other ladder manufacturers. Because we focus on the concerns of the professional user, Bauer products have unique value-added features aimed to reduce ladder related injuries and worker's compensation claims.

Unique features standard on Bauer ladders include clear indicators promoting safe use as well as options such as lighter, professional grade extension ladders. These are proven to decrease injuries and worker's compensation claims! In addition to our standard safety features, Bauer has several options that further increase durability and safety including unique accessories like the Strand Grabber designed to prevent falls: providing safer mid-span access for the cable installer and line technician.

Combining better products designed for the professional user with best-in-class service; Bauer is the ladder of choice!

FIBERLITE NEXT GEN

The second generation of Bauer's light-weight technology is the perfect balance of light-weight and durability

Better Visibility

- High-viz green side rails are perfect for working in high traffic areas.

Poly Coated Side Rails

- All light-weight FiberLite NextGen ladders have poly coated side rails to provide protection from UV damage in addition to the ANSI required UV inhibitors.

Safety Red Rungs

- Red rungs mean determining the highest standing has never been easier. It's easy, don't stand on red!

Stronger

- Welded rung to plate connection provides a lighter, stronger connection compared to traditional ladders

Safer Handling

- A bull's eye label is located at the center-point for the weight of each ladder promoting safe handling and decreasing workers comp claims

Upgraded Rope Is Standard

- The center-mounted rope and pulley system incorporates an upgraded rope that is more comfortable and easier to use than our competitors.
- Compliance: ANSI A14.5/OSHA

TYPE 1AA

RATED TO
375 lbs



Item #	Size	Base Width	Extended Length	Highest Standing Level	Weight
39216	16'	16 3/4"	13'	9' 6"	33.5 lbs
39220	20'	16 3/4"	17'	13' 6"	41 lbs
39224	24'	16 3/4"	21'	17' 6"	47.5 lbs
39228	28'	16 3/4"	25'	21' 6"	53.5 lbs

with Automatic Levelers

Item #	Size	Base Width	Extended Length	Highest Standing Level	Weight
39216L	16'	20 1/2"	13'	9' 6"	40.5 lbs
39220L	20'	20 1/2"	17'	13' 6"	48 lbs
39224L	24'	20 1/2"	21'	17' 6"	54.5 lbs
39228L	28'	20 1/2"	25'	21' 6"	60.5 lbs

with Cable Hook/Pole Grip Combo

Item #	Size	Base Width	Extended Length	Highest Standing Level	Weight
39216V	16'	16 3/4"	13'	9' 6"	34.5 lbs
39220V	20'	16 3/4"	17'	13' 6"	42 lbs
39224C	24'	16 3/4"	21'	17' 6"	49 lbs
39228C	28'	16 3/4"	25'	21' 6"	55 lbs

* 16' and 20' sizes include rigid-v pole grip only. Other sizes include cable hooks and rigid-v pole grip.

* Add "L" to the end of the part number to include Automatic Levelers.



FIBERLITE



Light-Weight . Extension Ladder . Fiberglass



Bullseye label marks the center point for the weight of the ladder. Promoting safe handling techniques!

- Compliance: ANSI A14.5/OSHA

TYPE IAA		RATED TO 375 lbs		ANSI OSHA	
Item #	Size	Base Width	Extended Length	Highest Standing Level	Weight with cable hook/pole grip combo
38116*	16'	17 3/4"	13'	9' 6"	38 lbs
38120*	20'	17 3/4"	17'	13' 6"	46 lbs
38124	24'	17 3/4"	21'	17' 6"	54.5 lbs
38128	28'	17 3/4"	25'	21' 6"	62 lbs
38132	32'	17 3/4"	29'	25' 6"	69.5 lbs

*16' and 20' sizes with pole grip only. 24' through 32' sizes come with cable hook/pole grip combo

TYPE IA		RATED TO 300 lbs		ANSI OSHA	
Item #	Size	Base Width	Extended Length	Highest Standing Level	Weight with cable hook/pole grip combo
38016*	16'	17 3/4"	13'	9' 6"	34 lbs
38020*	20'	17 3/4"	17'	13' 6"	41 lbs
38024	24'	17 3/4"	21'	17' 6"	49.5 lbs
38028	28'	17 3/4"	25'	21' 6"	56 lbs
38032	32'	17 3/4"	29'	25' 6"	62.5 lbs

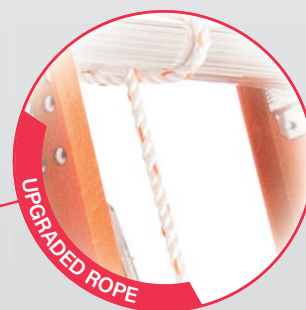
*16' and 20' sizes with pole grip only. 24' through 32' sizes come with cable hook/pole grip combo



The highest standing level has never been more clear! It's easy, don't stand on red!



Yellow rail is standard
Orange rail is light-weight FiberLite rail



The center-mounted rope and pulley system incorporates an upgraded rope that is more comfortable and easier to use than our competitors.

38124

SERIES 313

Extension Ladder . Fiberglass

- Factory installed cable hook-pole grip combo
- D-shaped rungs
- Riveted rung to rail construction
- Red rungs to clearly designate highest standing level
- Upgraded 3/8" diameter rope and pulley system on 20' and above
- Fly section is 3" longer than base section to better accommodate accessories
- Bullseye label on the side rail marks the center-point for the weight of the ladder to promote safe handling techniques
- Compliance: ANSI A14.5/OSHA

TYPE IAA **RATED TO 375^{lbs}** **ANSI** **OSHA**

Item #	Size	Base Width	Extended Length	Highest Standing Level	Weight
31316*	16'	17 3/4"	13'	9' 6"	39 lbs
31320*	20'	17 3/4"	17'	13' 6"	47 lbs
31324	24'	17 3/4"	21'	17' 6"	56 lbs
31328	28'	17 3/4"	25'	21' 6"	62 lbs
31332	32'	17 3/4"	29'	25' 6"	70 lbs

*16' and 20' sizes with pole grip only



31328

SERIES 311

Extension Ladder . Fiberglass

- Factory installed cable hook-pole grip combo
- D-shaped rungs
- Red rungs to clearly designate highest standing level
- Upgraded 3/8" diameter rope and pulley system
- Bullseye label on the side rail marks the center-point for the weight of the ladder to promote safe handling techniques
- Compliance: ANSI A14.5/OSHA

TYPE IA **RATED TO 300^{lbs}** **ANSI** **OSHA**

Item #	Size	Base Width	Extended Length	Highest Standing Level	Weight
31124	24'	17 3/4"	21'	17' 6"	60 lbs
31128	28'	17 3/4"	25'	21' 6"	68 lbs
31132	32'	17 3/4"	29'	25' 6"	77 lbs



31124

SERIES 361



Fiberglass Combo Step/Extension Ladder


TYPE IAA
**RATED TO
375 lbs**


36107

As Extension details

Item #	Size	Base Width	Extended Length	Highest Standing Level	Weight
36106	12'	23 ½"	9' 5"	5' 4"	37 lbs
36107	14'	24 ¼"	11' 5"	7' 4"	38 lbs
36108	16'	25"	13' 5"	9' 4"	42 lbs

As Step Ladder details

Item #	Size	Base Width	Spread	Highest Standing Level	Weight
36106	6'	23 ½"	46"	5' 4"	37 lbs
36107	7'	24 ¼"	53"	7' 4"	38 lbs
36108	8'	25"	60"	9' 4"	42 lbs

FEATURES

- Converts quickly between step and extension mode
- Heavy-gauge padded v-pole grip
- Round rungs riveted to siderails
- Hoop-style safety shoes
- Vinyl coated sliding guides protect rails
- Compliance: ANSI A14.5/OSHA

SERIES 330 & 331

Straight Ladder . Fiberglass

Series 331

TYPE IAA

RATED TO
375^{lbs}



	Item #	Size	Base Width	Highest Standing Level	Weight
Riveted Rung	33108	8'	17 1/8"	4' 9"	24 lbs
	33110	10'	17 1/8"	6' 9"	27 lbs
	33112	12'	17 1/8"	8' 9"	30 lbs
	33114	14'	17 1/8"	10' 9"	32 lbs
	33116	16'	17 1/8"	12' 9"	36 lbs

Series 330

TYPE IA

RATED TO
300^{lbs}



	Item #	Size	Base Width	Highest Standing Level	Weight
	33008	8'	16 1/4"	4' 9"	19 lbs.
	33010	10'	16 1/4"	6' 9"	23 lbs.
	33012	12'	16 1/4"	8' 9"	26 lbs.
	33014	14'	16 1/4"	10' 9"	30 lbs.
	33016	16'	16 1/4"	12' 9"	33 lbs.
Riveted Rung	33018	18'	19 1/4"	14' 9"	54 lbs.
	33020	20'	19 1/4"	16' 9"	60 lbs.
	33024	24'	19 1/4"	20' 9"	66 lbs.

- Solid aluminum rivet construction at critical stress points is stronger than tubular steel rivets and results in a longer service life for your ladder.
- Our high-profile, slip-resistant D-shaped rungs are riveted to the side rails on the 331 series: this is a stronger connection and allows for replacement of the rungs if needed. The high-profile D-rungs on the 330 series are mounted through the side rails for a tight direct rung-to-rail connection.
- Light-weight, but durable aluminum two-way swivel shoes have suction cup rubber treads and also spikes for soft ground.
- Non marring acrylic end caps for sizes 8' - 16' sizes. Cast aluminum end caps are featured on the 33018, 33020 and 33024 models.
- Compliance: ANSI A14.5/OSHA



33108

SERIES 336

Vault Manhole Ladder . Fiberglass

TYPE IAA

RATED TO
375^{lbs}



	Item #	Size	Base Width	Highest Standing Level	Weight
	33608	8'	12 1/8"	4' 9"	21 lbs.
	33610	10'	12 1/8"	6' 9"	25 lbs.
	33612	12'	12 1/8"	8' 9"	27 lbs.
	33614	14'	12 1/8"	10' 9"	32 lbs.
	33616*	16'	12 1/8"	12' 9"	36 lbs.
	33620*	20'	12 1/8"	14' 9"	45 lbs.

*Type IA rated to 300 lbs

- Solid aluminum rivet construction at critical stress points is stronger than tubular steel rivets and results in a longer service life for your ladder.
- 36" long rail sleeves protect the side rails from abrasive manhole rims and surfaces.
- Vinyl coated hoop ends provide a better lifting point than standard end caps.
- Our high-profile, slip-resistant D-shaped rungs are riveted to the side rails to facilitate replacement and are more durable than direct rung-to-rail designs.
- Extra-large padded hoop shoes provide added grip and stability while giving you another easy grip point for ladder transport.
- Heavy gauge aluminum plates reinforce the hoop shoe attachments and protect side rails from excessive damage.
- Compliance: ANSI A14.5/OSHA



33610

SERIES 339

Tapered Sectional . Fiberglass

TYPE IAA RATED TO **375** lbs **ANSI OSHA**

Base Sections with swivel shoes

Item #	Size	Base Width	Weight
33953	3'	23"	12 lbs
33956	6'	23"	20 lbs

Base Sections with hoop-style shoes

33952	3'	23"	12 lbs
33957	6'	23"	20 lbs

Add-on Sections without shoes or endcaps

33955	6'	23"	20 lbs
-------	----	-----	--------

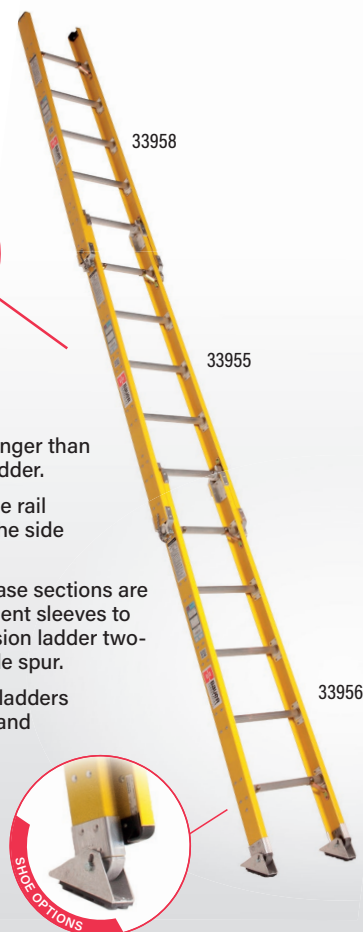
Top Sections with endcap

33958	6'	23"	20 lbs
-------	----	-----	--------

*Duty rating is 300 lbs if assembled to height of more than 16'.

*Max height of combined sections is 18'.

- Solid aluminum rivet construction at critical stress points is stronger than tubular steel rivets and results in a longer service life for your ladder.
- Our high-profile, slip resistant round rungs are riveted to the side rail to provide a more durable rung connection than rung-through the side rail designs and facilitates the placement of rungs if necessary.
- Optional Shoe Styles Available- The shoe attachments on the base sections are reinforced with castings and heavy gauge aluminum reinforcement sleeves to provide a stronger connection point for either a standard extension ladder two-way shoe style or a rounded shoe with rubber tread and movable spur.
- Easy to Transport- With our easy to use design, these sectional ladders are easy to assemble, to maximum of 18' overall, in tight places and reduces the need for long extension or straight ladders.
- Optional aluminum locking pins are available to lock sections together for underground applications.
- Compliance: ANSI A14.5/OSHA



SERIES 333

Parallel Sectional . Fiberglass

TYPE IA RATED TO **300** lbs **ANSI OSHA**

Base Sections with two-way shoe style

Item #	Size	Base Width	Weight
33314	4'	12"	12 lbs
33316	6'	12"	15 lbs
33324	4'	17 3/4"	13 lbs
33326	6'	17 3/4"	17 lbs

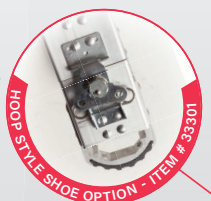
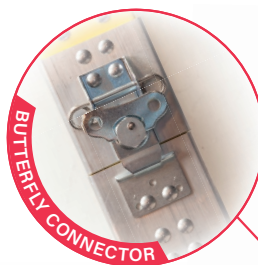
Add-on Sections without shoes or endcaps

33304	4'	12"	12 lbs
33306	6'	12"	15 lbs
33334	4'	17 3/4"	13 lbs
33336	6'	17 3/4"	17 lbs

Accessories. Sold as each. Order 2 for pair.

33301	Hoop Style Shoe	3 lbs ea.
33302	Hoop Style Handle	3 lbs ea.

- **Solid Aluminum Rivet Construction**
Solid aluminum rivet construction at critical stress points is stronger than tubular steel rivets and results in a longer service life for your ladder.
- **Riveted Rung-to-Rail Design**
Our high-profile, slip resistant round rungs are riveted to the side rail to provide a more durable rung connection than rung-through the side rail designs and facilitates the replacement of rungs if necessary.
- **Optional Shoe Styles Available**
Two-way shoe style (similar to extension ladders) is standard on base sections. If a rounded, hoop style shoe is desired, order an add-on section and two hoop style shoes (part# 33301). This will allow the add-on section to be used as a base section.
- **Optional End Cap Styles Available**
Choose between Bauer's standard extension ladder end cap or a coated hoop end cap that provides easy extraction from underground applications. Both styles provide protection to side rail ends as well as the surface the ladder is leaning against.
- **Reinforcement Sleeves**
Heavy-duty aluminum reinforcement sleeves at connector areas provide added strength when assembled. Sections are easily assembled for multiple heights up to a maximum length of 18'.
- Compliance: ANSI A14.5/OSHA



SERIES 350

Step Ladder . Fiberglass

BEST

Item #	Size	Base Width	Spread	Highest Standing Level	Weight
35002*	2'	18"	24"	1' 11"	11 lbs
35003	3'	17 3/4"	28 1/2"	1'	15 lbs
35004	4'	19 1/4"	34 1/2"	2'	18 lbs
35005	5'	20 3/4"	42"	2' 9"	21 lbs
35006	6'	22 1/4"	49 1/2"	3' 9"	25 lbs
35007	7'	23 3/4"	58 1/2"	4' 7"	30 lbs
35008	8'	25 1/4"	68 1/4"	5' 9"	33 lbs
35010	10'	28 1/4"	77 1/4"	7' 6"	43 lbs
35012	12'	31 1/4"	92 3/4"	9' 6"	52 lbs
35014*	14'	34 1/4"	107"	11' 6"	68 lbs
35016*	16'	37 1/4"	122"	13' 5"	77 lbs

*Type IA rated to 300 lbs

TYPE IAA

RATED TO 375 lbs



- Fully braced steps and cross braces provides unmatched durability.
- Solid aluminum rivet construction at critical stress points is stronger than tubular steel rivets and results in a longer service life for your ladder.
- Side rail reinforcement sleeves at spreader connection points provide superior strength and durability.
- Our innovative Boot Shoe provides complete side rail protection and greater surface contact for increased slip resistance.
- A 20° climbing angle reduces worker fatigue and is more comfortable to climb than our competition's ladder.
- Compliance: ANSI A14.5/OSHA



Step and Platform Ladders

SERIES 308

Step Ladder . Fiberglass

BETTER

Item #	Size	Base Width	Spread	Highest Standing Level	Weight
30803	3'	17 3/4"	26 1/2"	1'	14 lbs.
30804	4'	19 1/4"	34 1/2"	2'	16 lbs.
30805	5'	20 3/4"	42"	2' 9"	19 lbs.
30806	6'	22 1/4"	49 1/2"	3' 9"	23 lbs.
30807	7'	23 3/4"	58 1/2"	4' 7"	28 lbs.
30808	8'	25 1/4"	68 1/4"	5' 9"	32 lbs.
30810	10'	28 1/4"	86"	7' 6"	41 lbs.
30812	12'	31 1/4"	94"	9' 6"	49 lbs.

TYPE IAA

RATED TO 375 lbs



- Each step is braced providing a strong and durable ladder
- Solid aluminum rivet construction at critical stress points is stronger than tubular steel rivets and results in a longer service life for your ladder.
- Our innovative, non-marring, Boot Shoe provides complete side rail protection and greater surface contact for increased slip resistance.
- A 20° climbing angle reduces worker fatigue and is more comfortable to climb than our competition's ladder.
- Compliance: ANSI A14.5/OSHA



SERIES 304

Step Ladder . Fiberglass

GOOD

Item #	Size	Base Width	Spread	Highest Standing Level	Weight
30402	2'	17 3/8"	21 3/8"	1' 11"	9 lbs
30403	3'	17 3/4"	26 1/2"	1'	13 lbs
30404	4'	19 1/4"	34 1/2"	2'	16 lbs
30405	5'	20 3/4"	42"	2' 9"	19 lbs
30406	6'	22 1/4"	49 1/2"	3' 9"	22 lbs
30408	8'	25 1/4"	68 1/4"	5' 9"	30 lbs
30410	10'	28 1/4"	86"	7' 6"	40 lbs
30412	12'	31 1/4"	94"	9' 6"	47 lbs

TYPE IA

RATED TO 300 lbs



- Our most popular step ladder. A good mix of durability and affordability!
- Solid aluminum rivet construction at critical stress points is stronger than tubular steel rivets and results in a longer service life for your ladder.
- Our innovative, non-marring, Boot Shoe provides complete side rail protection and greater surface contact for increased slip resistance over competitive models.
- A 20° climbing angle reduces worker fatigue and is more comfortable to climb than our competition's ladder.
- Compliance: ANSI A14.5/OSHA



SERIES 352

Two-Way Step Ladder . Fiberglass



TYPE IAA RATED TO 375^{lbs} ANSI OSHA

Item #	Size	Base Width	Spread	Highest Standing Level	Weight
35202*	2'	19"	21 3/8"	23'	11 lbs
35203	3'	19"	21 3/8"	1'	19 lbs
35204	4'	20 1/2"	40"	2'	23 lbs
35205	5'	22"	48 1/2"	2' 9"	27 lbs
35206	6'	23 1/2"	53 3/4"	3' 9"	32 lbs
35208	8'	26 1/2"	70 1/2"	5' 9"	42 lbs
36210	10'	29 1/2"	89 3/4"	7' 6"	55 lbs
35212	12'	32 1/2"	105 3/4"	9' 6"	67 lbs
35214*	14'	35 1/2"	122"	11' 6"	86 lbs
35216*	16'	38 1/2"	138 3/4"	13' 5"	101 lbs

*Type IA rated to 300 lbs



35202



35206

- Permits access from each side or two workers at one time (one on each side).
- Every step is fully braced for added strength and durability.
- Our innovative Boot Shoes provide complete side rail protection and greater surface contact for increased slip resistance.
- Spreader reinforcement sleeves at connection points to the side rail provide superior strength and durability.
- A 20° climbing angle reduces worker fatigue and is more comfortable to climb than our competition's ladder.
- Compliance: ANSI A14.5/OSHA

SERIES 354

Two-way Step Ladder . Fiberglass

- Permits access from each side or two workers at one time (one on each side).
- Solid aluminum rivet construction at critical stress points is stronger than tubular steel rivets and results in a longer service life for your ladder.
- Our innovative Boot Shoes provide complete side rail protection and greater surface contact for increased slip resistance over competitive models.
- A 20° climbing angle reduces worker fatigue and is more comfortable to climb than our competition's ladder.
- 35400 step stool features extended side rails to allow for safer use as support for a walk plank.
- Compliance: ANSI A14.5/OSHA

TYPE IA RATED TO 300^{lbs} ANSI OSHA

Item #	Size	Base Width	Spread	Highest Standing Level	Weight
35400	2'	17 3/8"	21 3/8"	1' 11"	12 lbs
35404	4'	20 1/2"	40"	2'	23 lbs
35405	5'	22"	48 1/2"	2' 9"	27 lbs
35406	6'	23 1/2"	53 3/4"	3' 9"	31 lbs
35408	8'	26 1/2"	70 1/2"	5' 9"	40 lbs
35410	10'	29 1/2"	89 3/4"	7' 6"	52 lbs
35412	12'	32 1/2"	105 3/4"	9' 6"	63 lbs



35400



35406

SERIES 351

Platform Ladder . Fiberglass



35106



TYPE IAA

RATED TO
375 lbs



- Safer and more comfortable when working at repetitive heights
- Uniquely designed, durable top cap holds tools, fasteners, and small parts while hugging the user's legs
- Solid aluminum rivet construction at critical stress points is stronger than tubular steel rivets and results in a longer service life for your ladder.
- Our innovative Boot Shoes provide complete side rail protection and greater surface contact for increased slip resistance.
- A 215 sq. in. heavy gauge steel platform with safety tread offers maximum comfort and strength.
- Compliance: ANSI A14.5/OSHA

Item #	Overall Height	Platform Height	Base Width	Spread	Weight
35104	4'	1' 10"	23"	31"	27 lbs
35105	5'	2' 9"	25"	36 1/2"	30 lbs
35106	6'	3' 8"	26"	42 3/4"	34 lbs
35107	7'	4' 7"	27 1/2"	48 1/2"	37 lbs
35108	8'	5' 7"	29"	54 1/2"	41 lbs
35110	10'	7' 5"	32"	65"	55 lbs
35112*	12'	9' 4"	35"	77 1/2"	64 lbs
35114*	14'	11' 3"	38"	88 1/2"	79 lbs

*Type IA rated to 300 lbs

SERIES 201

Aluminum Step Ladders

TYPE IA

RATED TO
300 lbs

OSHA

Item #	Size	Base Width	Spread	Highest Standing Level	Weight
20104	4'	20 1/2"	21 3/8"	2'	14 lbs
20105	5'	22"	44 3/4"	2'9"	17 lbs
20106	6'	23 1/2"	51 3/4"	3'9"	20 lbs
20108	8'	26 1/2"	65 1/2"	5'9"	29 lbs
20110	10'	29 1/2"	80"	7'6"	38 lbs
20112	12'	32 1/2"	95 1/2"	9'6"	44 lbs
20114	14'	35 1/2"	105 1/2"	11'6"	53 lbs
20116	16'	38 1/2"	116 1/2"	13'6"	63 lbs

- Heavy gauge, but light-weight aluminum one way step ladder.
- Double braced bottom step for added durability.
- Molded top cap easily accommodates tools and fasteners.
- Compliance ANSI A14.2/OSHA



SERIES 200

Aluminum Two-Way Step Ladders

TYPE IA

RATED TO
300 lbs

OSHA

Item #	Size	Base Width	Spread	Highest Standing Level	Weight
20004	4'	20 1/2"	40"	2'	21 lbs
20005	5'	22"	48 1/2"	2'9"	25 lbs
20006	6'	23 1/2"	53 3/4"	3'9"	29 lbs
20008	8'	26 1/2"	70 1/2"	5'9"	38 lbs
20010	10'	29 1/2"	89 3/4"	7'6"	50 lbs
20012	12'	32 1/2"	105 3/4"	9'6"	62 lbs
20014	14'	35 1/2"	122"	11'6"	75 lbs
20016	16'	38 1/2"	138 3/4"	13'5"	87 lbs

- Permits access from each side or two workers at one time (one on each side).
- Heavy gauge, but light-weight weight aluminum side rails.
- Durable, aluminum hinged top for added strength.
- Double braced bottom steps provide added durability.
- Compliance ANSI A14.2/OSHA



SERIES 204

Aluminum Platform Ladders

TYPE IAA

RATED TO
375 lbs

OSHA

Item #	Overall Height	Platform Height	Base Width	Spread	Weight
20404	4'	1'9"	23"	31"	26 lbs
20406	6'	3'9"	26"	42 3/4"	31 lbs
20408	8'	5'9"	29"	54 1/2"	38 lbs
20410	10'	7'6"	32"	65"	49 lbs
20412*	12'	9'6"	35"	77 1/2"	58 lbs

*Type IA rated to 300 lbs

- Safer and more comfortable when working at repetitive heights.
- Uniquely designed, durable top cap holds tools, fasteners and small parts while hugging the user's legs
- Large platform with safety tread provides a comfortable, safe surface to work from.
- Compliance ANSI A14.2/OSHA



SERIES 315

Extension . Fiberglass

Type IAA 375 lbs rated



Item #	Size	Base Width	Extended Length	Highest Standing Level	Weight
31516	16'	17 3/4"	13'	9' 6"	42 lbs
31520	20'	17 3/4"	17'	13' 6"	51 lbs
31524	24'	17 3/4"	21'	17' 6"	60 lbs
31528	28'	17 3/4"	25'	21' 6"	68 lbs
31532	32'	17 3/4"	29'	25' 6"	77 lbs

Type IA 300 lbs rated

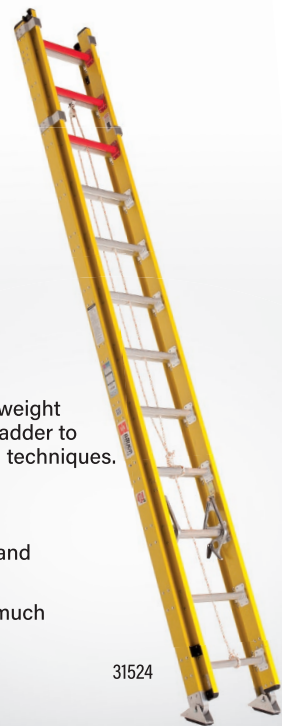
31536	36'	18 7/8"	32'	28' 6"	107 lbs
31540	40'	18 7/8"	35'	31' 6"	116 lbs

Type I 250 lbs rated

31544	44'	18 7/8"	39'	35' 6"	133 lbs
31548	48'	18 7/8"	43'	39' 6"	145 lbs

- Safety red rungs means highest standing level is clearly defined and has never been easier to determine. It's easy don't stand on red!
- A target label designates the center-point for the weight of the ladder so the user knows where to grab the ladder to transport it safely: promoting safe handling/lifting techniques.
- Light-weight but durable aluminum two-way shoes with rubber tread/spike shoes.
- Serrated aluminum D-shaped rungs provide grip and added comfort. Rungs are riveted to side rails.
- Larger 3/8" diameter rope with wear indicator is much easier on the user's hands than the competition's. (16' size does not include rope & pulley system)
- Compliance: ANSI A14.5/OSHA

31524



Extension Ladders

SERIES 310

Extension . Fiberglass

TYPE IA

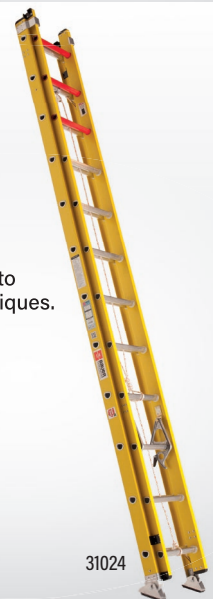
RATED TO 300^{lbs}



Item #	Size	Base Width	Extended Length	Highest Standing Level	Weight
31016	16'	17 1/4"	13'	9' 6"	37 lbs
31020	20'	17 1/4"	17'	13' 6"	44 lbs
31024	24'	17 1/4"	21'	17' 6"	52 lbs
31028	28'	17 1/4"	25'	21' 6"	60 lbs
31032	32'	17 1/4"	29'	25' 6"	68 lbs
32236	36'	17 1/4"	29'	25' 6"	80 lbs
32240	40'	17 1/4"	33'	29' 6"	89 lbs

- Safety red rungs means highest standing level is clearly defined and has never been easier to determine. It's easy don't stand on red!
- A target label designates the center-point for the weight of the ladder so the user knows where to grab the ladder to transport it safely: promoting safe handling/lifting techniques.
- Light-weight but durable aluminum two-way shoes with rubber tread/spike shoes.
- Serrated aluminum D-shaped rungs provide grip and added comfort.
- Larger 3/8" diameter rope with wear indicator is much easier on the user's hands than the competition's. (16' size does not include rope & pulley system)
- Compliance: ANSI A14.5/OSHA

31024



SERIES 221

Extension . Aluminum

TYPE IA

RATED TO 300^{lbs}



Item #	Size	Base Width	Extended Length	Highest Standing Level	Weight
22116	16'	18 1/4"	13'	9' 6"	35 lbs
22120	20'	18 1/4"	17'	13' 6"	42 lbs
22124	24'	18 1/4"	21'	17' 6"	49 lbs
22128	28'	18 1/4"	25'	21' 6"	57 lbs
22132	32'	18 1/4"	29'	25' 6"	76 lbs
22136	36'	18 1/4"	32'	28' 6"	85 lbs
22140	40'	18 1/4"	35'	31' 6"	92 lbs

- A bullseye label designates the center-point for the weight of the ladder: promoting safe handling/lifting techniques
- Serrated aluminum D-rungs provide grip and added comfort.
- Upgraded rope is more comfortable and easier to use than the competitors. 16' size does not include rope & pulley system
- Compliance ANSI A14.2/OSHA

22124



SERIES 314



Separable Extension/Single Section . Fiberglass



FEATURES

- Versatile ladder that can be used as an extension ladder or single section straight ladder. Rounded hoop style shoes on the fly section allow it to be safely used as single section straight ladder.
- Safety red rungs means highest standing level is clearly defined and has never been easier to determine. It's easy don't stand on red!
- A target label designates the center-point for the weight of the ladder so the user knows where to grab the ladder to transport it safely: promoting safe handling/lifting techniques.
- Light-weight, but durable aluminum two-way swivel shoes have suction cup rubber treads and also spikes for soft ground.
- Serrated aluminum D-shaped rungs provide grip and added comfort. Rungs are riveted to side rails.
- Larger 3/8" diameter rope with wear indicator is much easier on the user's hands than the competition's rope. (16' size does not include rope & pulley system)
- Compliance: ANSI A14.5/OSHA

TYPE IAA

RATED TO
375 lbs



Item #	Size	Single Size	Base Width	Extended Length	Highest Standing Level	Weight
31416	16'	8'	17 3/4"	13'	9' 6"	41 lbs
31420	20'	10'	17 3/4"	17'	13' 6"	50 lbs
31424	24'	12'	17 3/4"	21'	17' 6"	59 lbs
31428	28'	14'	17 3/4"	25'	21' 6"	66 lbs
31432	32'	16'	17 3/4"	29'	25' 6"	73 lbs

SERIES 200

Sawhorse . Aluminum

- Heavy gauge aluminum rails, top, hinges, and double braced bottom steps provide a sturdy, durable sawhorse that is built to last.
- Permits access from two sides or two workers at one time (one on each side).
- Solid aluminum rivet construction at critical stress points provides a stronger sawhorse with a longer service life.
- Compliance ANSI A14.2/OSHA

TYPE IA **RATED TO 300^{lbs}** **ANSI** **OSHA**

Item #	Size	Top Width	Base Width	Spread	Highest Standing Level	Weight
20052	2'	30"	33"	23"	23"	19 lbs
20053	3'	30"	35"	31"	1'	25 lbs
20054	4'	30"	37"	40"	2'	31 lbs



20900 FOLD-N-GO

Work Platform . Aluminum



- Easy to Transport - Folding legs that latch in place and a comfortable carrying handle make this work platform easy to maneuver and transport.
- 60 1/4" long by 22 3/4" wide slip resistant platform is perfect for side to side jobs and two person applications.
- Compliance ANSI A14.2/OSHA

RATED TO 500^{lbs} **ANSI** **OSHA**

Item #	Size	Highest Standing Level	Weight
20090	2'	1' 9"	34 lbs

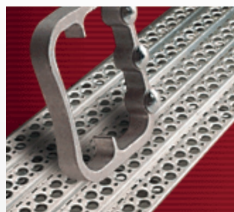


PLANKS AND STAGES



DESIGN FEATURES

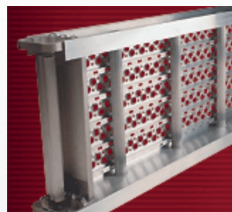
These rugged, high-strength aluminum planks and stages are ideal for use with pump jack systems or as catwalks over or under I-beams, pits, tanks, and machinery. They can also be used in ship building and maintenance and traditional building maintenance. Important design features make Bauer Aluminum Planks & Stages safer, more durable, flexible, and productive equipment for reaching your work.



Raised tread with open pattern provides slip-resistant surface.



Rigid I-beam side rails provide best strength/weight/cost relationship.



D-rung cross bracing provides superior deck support.



Staggered rail handles permit continuous end to end positioning.



Connectors, sold separately (for 4" deep planks part# 08430; 6" deep planks part# 08432), interlock platforms to prevent separation.

Guard Rail Kit One Side*

Item #	Length	Weight
Four Inch Side Rails		
08202	12 Ft	30 lbs
08204	16 Ft	35 lbs
08206	20 Ft	43 lbs
08208	24 Ft	49 lbs
Six Inch Side Rails		
08210	20 Ft	35 lbs
08212	24 Ft	49 lbs
08214	28 Ft	63 lbs
08216	30 Ft	77 lbs
08218	32 Ft	91 lbs

* Requires 2 kits for 2 sides

Guard Rail Kit One End*

Item #	Width	Weight
Four Inch Side Rails		
08220	12 in	3 lbs
08222	14 in	3 lbs
08224	20 in	4 lbs
08226	24 in	4 lbs
08228	28 in	5 lbs

* Requires 2 kits for 2 sides

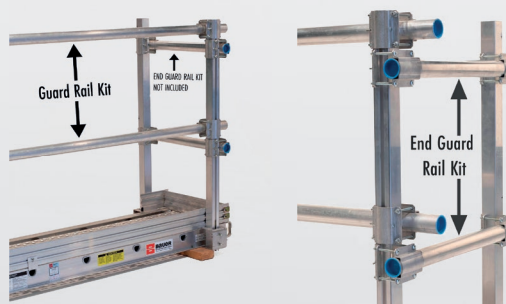
Return Post Kit*

Part Number	Wt.
08402	5 lbs

* Required only when one side rail kit is used with an end rail.

MODULAR GUARD RAIL SYSTEMS

Bauer guard rail systems are available as complete kits or individual parts. Selection of the proper kit part number is based on the following plank or stage dimensions: size of the side rail (4" or 6"), length, and width.



MODULAR TOE BOARD SYSTEMS

Toe board systems are available as complete kits or individual parts. Toe board systems are either "dependent," requiring guard rail systems for attachment, or "independent," attaching directly to the plank or stage without guard rails. Toe board kits are supplied as side and end units in 4" and 6" heights. Each kit includes all the necessary components for installation.

Dependent Toe Board Kit One Side*

Item #	Length	Weight
Four Inch Toe Board		
08230	8 Ft	9 lbs
08232	12 Ft	13 lbs
08234	16 Ft	17 lbs
08236	20 Ft	21 lbs
08238	24 Ft	25 lbs
08240	28 Ft	29 lbs
08242	30 Ft	31 lbs
08244	32 Ft	33 lbs

* Requires 2 kits for 2 sides

Dependent Toe Board Kit One Side*

Item #	Length	Weight
Six Inch Toe Board		
08246	8 Ft	11 lbs
08248	12 Ft	15 lbs
08250	16 Ft	19 lbs
08252	20 Ft	23 lbs
08254	24 Ft	27 lbs
08256	28 Ft	31 lbs
08258	30 Ft	33 lbs
08260	32 Ft	35 lbs

* Requires 2 kits for 2 sides

Dependent Toe Board Kit One End*

4" Item #	6" Item #	Length	Weight
Four and Six Inch Toe Board			
08262	08272	12 in	2 lbs
08264	08274	14 in	2 lbs
08266	08276	20 in	2 lbs
08268	08278	24 in	3 lbs
08270	08280	28 in	3 lbs

* Requires 2 kits for 2 sides

Independent Toe Board Kit One Side 4" Rail*

4" Item #	6" Item #	Length	Weight
Four and Six Inch Toe Board			
08282	08298	8 Ft	9 lbs
08284	08300	12 Ft	13 lbs
08286	08302	16 Ft	17 lbs
08288	08304	20 Ft	21 lbs
08290	08306	24 Ft	25 lbs

* Requires 2 kits for 2 sides

1 Man

RATED TO
250 lbs

Length	12" wide			14" wide			20" wide		
	Item #	Side Rail	Weight	Item #	Side Rail	Weight	Item #	Side Rail	Weight
8'	20220	4"	28 lbs	20230	4"	31 lbs	20250	4"	38 lbs
12'	20222	4"	40 lbs	20232	4"	44 lbs	20252	4"	55 lbs
16'	20224	4"	52 lbs	20234	4"	58 lbs	20254	4"	71 lbs
20'	20226	4"	64 lbs	20236	4"	71 lbs	20256	4"	87 lbs
24'	20228	4"	89 lbs	20238	4"	97 lbs	20258	4"	116 lbs

2 Man

RATED TO
500 lbs

Length	12" wide			14" wide			20" wide		
	Item #	Side Rail	Weight	Item #	Side Rail	Weight	Item #	Side Rail	Weight
8'	21006	4"	28 lbs	21030	4"	31 lbs	22010	4"	38 lbs
12'	21008	4"	46 lbs	20132	4"	52 lbs	22012	4"	61 lbs
16'	21010	4"	61 lbs	20134	4"	66 lbs	22014	4"	79 lbs
20'	21012	6"	80 lbs	20136	6"	88 lbs	22016	6"	106 lbs
24'	21014	6"	95 lbs	20138	6"	105 lbs	22018	6"	126 lbs
28'	21016	6"	110 lbs	20140	6"	121 lbs	22020	6"	146 lbs
30'	21018	6"	118 lbs	20142	6"	130 lbs	22022	6"	158 lbs
32'	21020	6"	125 lbs	20144	6"	136 lbs	22024	6"	166 lbs

Length	24" wide			28" wide		
	Item #	Side Rail	Weight	Item #	Side Rail	Weight
8'	22040	4"	41 lbs	22070	4"	47 lbs
12'	22042	4"	66 lbs	22072	4"	72 lbs
16'	22044	4"	86 lbs	22074	4"	94 lbs
20'	22046	6"	116 lbs	22076	6"	126 lbs
24'	22048	6"	138 lbs	22078	6"	150 lbs
28'	22050	6"	160 lbs	22080	6"	174 lbs
30'	22052	6"	173 lbs	22082	6"	179 lbs
32'	22054	6"	182 lbs	22084	6"	189 lbs
36'	22056	6"	204 lbs	22086	6"	209 lbs
40'	22058	6"	226 lbs	22088	6"	230 lbs

3 Man

RATED TO
750 lbs

Length	20" wide			24" wide			28" wide		
	Item #	Side Rail	Weight	Item #	Side Rail	Weight	Item #	Side Rail	Weight
16'	23014	6"	86 lbs	23044	6"	94 lbs	23074	6"	102 lbs
20'	23016	6"	106 lbs	23046	6"	116 lbs	23076	6"	126 lbs
24'	23018	6"	126 lbs	23048	6"	138 lbs	23078	6"	150 lbs
28'	23020	6"	161 lbs	23050	6"	175 lbs	23080	6"	189 lbs
30'	23022	6"	174 lbs	23052	6"	189 lbs	23082	6"	196 lbs
32'	23024	6"	183 lbs	23054	6"	199 lbs	23084	6"	206 lbs
36'	23026	6"	223 lbs	23056	6"	241 lbs	23086	6"	252 lbs
40'	23028	6"	248 lbs	23058	6"	268 lbs	23088	6"	280 lbs

OPTIONS



For Cable/Telecom Applications

STRAND GRABBER

Patent No. 9,382,759

- Minimizes ladder shifting and sliding on mid span applications
- Each cable hook actuates independently and therefore are both engaged with the strand on sloping strand applications – a vast improvement compared to conventional cable hooks!
- The hooks have a protective coating to protect the strand from damage and provide additional grip
- Adds very little weight compared to conventional cable hooks!
- Available on new light-weight extension ladders only. The Strand Grabber cannot be field installed on existing ladders, available on new ladders only.

Extra Light-Weight FiberLite Next Gen with factory insalled Strand Grabber

TYPE IAA

RATED TO
375 lbs

Item #	Size	Base Width	Extended Length	Highest Standing Level	Weight
39224S	24'	16 ¾"	21'	17' 6"	52 lbs
39228S	28'	16 ¾"	25'	21' 6"	58 lbs

Light-Weight FiberLite Extensions with factory insalled Strand Grabber

TYPE IAA

RATED TO
375 lbs

Item #	Size	Base Width	Extended Length	Highest Standing Level	Weight
38424	24'	17 ¾"	21'	17' 6"	57.5 lbs
38428	28'	17 ¾"	25'	21' 6"	65 lbs
38432	32'	17 ¾"	29'	25' 6"	72.5 lbs

TYPE IA

RATED TO
300 lbs

Item #	Size	Base Width	Extended Length	Highest Standing Level	Weight
38324	24'	17 ¾"	21'	17' 6"	52.5 lbs
38328	28'	17 ¾"	25'	21' 6"	59 lbs
38332	32'	17 ¾"	29'	25' 6"	65.5 lbs



ACCESSORIES

Additional accessories available,
call 330-262-3070 or visit www.bauerladder.com

Cable Hook/ Pole Grip Combo



Fits 310, 380

07401	User Install/Replacement
07402	Factory Installed

Fits 313, 314, 315, 381

07403	User Install/Replacement
07015	Factory Installed

Rigid Pole Grip



Fits 310

07007	User Install
07008	Factory Installed

Fits 314, 315

07009	User Install
07010	Factory Installed

Adjustable Nylon Pole Grip



Fits all
extensions and
single ladders.

07005	User Install
07006	Factory Installed

Self- Centering Rung



Fits 310, 380 Series

07011	User Install
07012	Factory Installed

Fits 313, 314, 315, 381, 392 Series

07013	User Install
07014	Factory Installed

House Pad



07021	User Install
07022	Factory Installed

Fiberlizer- Fiberglass Stabilizer



Similar design to traditional extension ladder stabilizers, but with some aluminum components replaced by non conductive fiberglass. Easy installed and removed, fits all fiberglass extension ladders except some 36'- 48' sizes. No tools required to install.

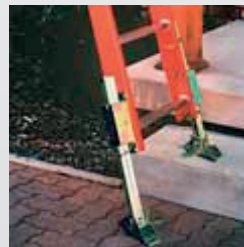
D092334	Kit - User Install
---------	--------------------

Auto Levelers



09016	User Install
09017	Factory Installed

Manual Levelers



09015	User Install
07019	Factory Installed

Steamline Levelers



Detachable ladder leveler. Don't carry the weight of levelers, when they aren't needed. Permanent base plates are skinny for easy fit into ladder racks.

LL-QC-3	Base Plates (pair)
LL-STB-IQC	Leveling Leg (one each)

Protective Rail Guard



Fits 310, 311, 313, 315, 380, 381 Series

07110	For 24' extensions
07111	For 28' extensions
07112	For 32' extensions

Poly Coating

Fiberglass side rails are poly coated for added protection from UV damage. This is in addition to the ANSI required UV inhibitors present in the side rail

07201	Factory applied
-------	-----------------

Double Pully

Allows for easier extension of the fly section of an extension ladder.

07915	Factory Installed Centered-mounted double pulley system
-------	--



2540 Progress Drive, Wooster, OH 44691
330-262-3070 www.bauerladder.com



USA Made

- Since 1917 -

Professional Grade

