

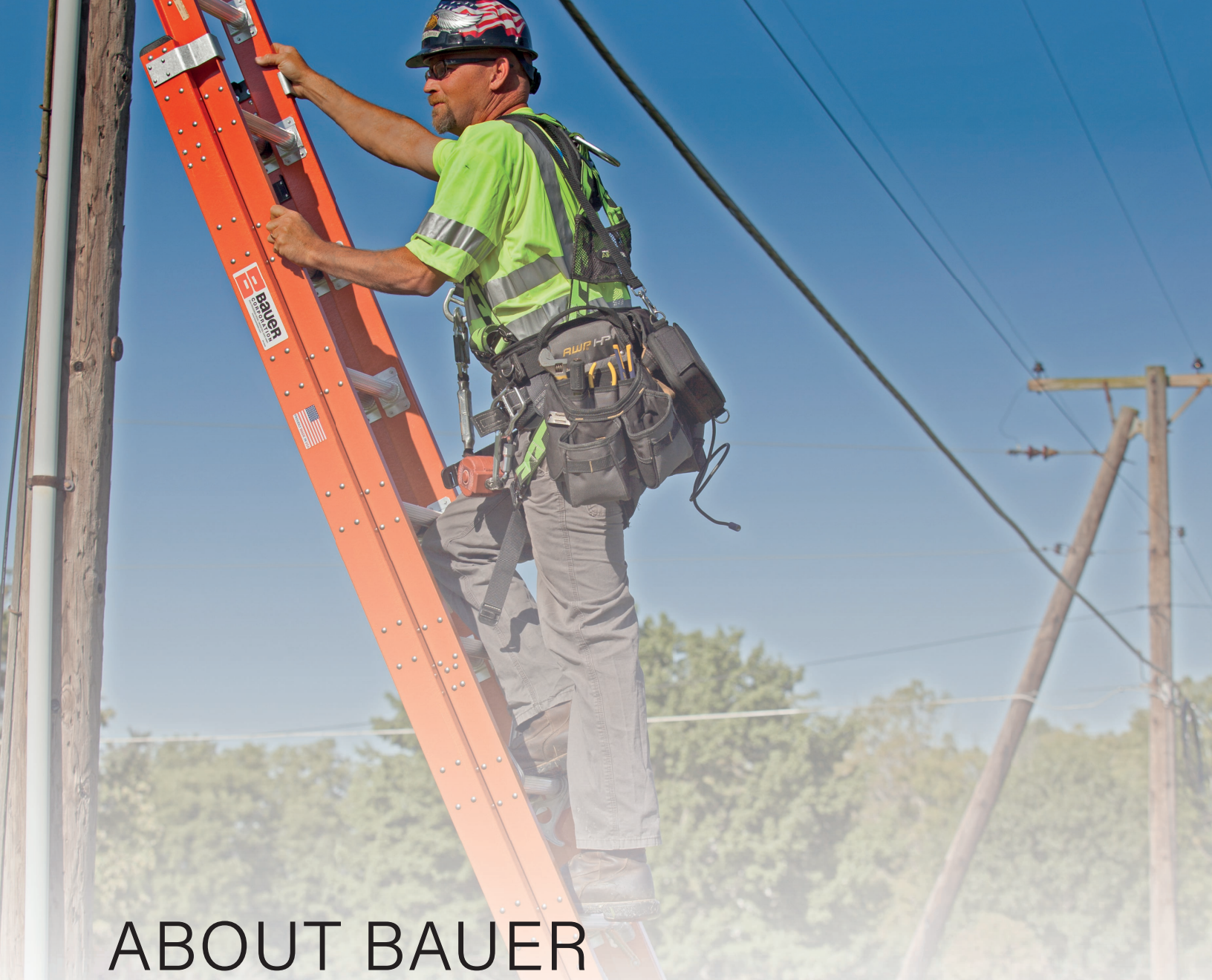


Bauer
LADDERS

Industrial &
Contractor Catalog



USA MADE · PROFESSIONAL GRADE



ABOUT BAUER

Since 1917, Bauer Corporation has been the leading U.S. manufacturer of higher performance work access equipment. We are committed to delivering the best product and service for assisting professionals to reach work more safely and efficiently. Our products, made by skilled craftsmen in Wooster, Ohio, are designed to be used several times a day, every day, as a tool required for the job. Therefore, our ladders, planks, and stages are built different, better!

WHAT MAKES BAUER DIFFERENT, BETTER

Through better design and craftsmanship, Bauer stands above other ladder manufacturers. Because we focus on the concerns of the professional user, Bauer products have unique value-added features aimed to reduce ladder related injuries and worker's compensation claims.

Unique features standard on Bauer ladders include clear indicators promoting safe use as well as options such as lighter, professional grade extension ladders. These are proven to decrease injuries and worker's compensation claims! In addition to our standard safety features, Bauer has several options that further increase durability and safety including unique accessories like the Strand Grabber designed to prevent falls: providing safer mid-span access for the cable installer and line technician.

Combining better products designed for the professional user with best-in-class service; Bauer is the ladder of choice!

SERIES 350

Step Ladder . Fiberglass

BEST

Item #	Size	Base Width	Spread	Highest Standing Level	Weight
35002*	2'	18"	24"	1' 11"	11 lbs
35003	3'	17 3/4"	28 1/2"	1'	15 lbs
35004	4'	19 1/4"	34 1/2"	2'	18 lbs
35005	5'	20 3/4"	42"	2' 9"	21 lbs
35006	6'	22 1/4"	49 1/2"	3' 9"	25 lbs
35007	7'	23 3/4"	58 1/2"	4' 7"	30 lbs
35008	8'	25 1/4"	68 1/4"	5' 9"	33 lbs
35010	10'	28 1/4"	77 1/4"	7' 6"	43 lbs
35012	12'	31 1/4"	92 3/4"	9' 6"	52 lbs
35014*	14'	34 1/4"	107"	11' 6"	68 lbs
35016*	16'	37 1/4"	122"	13' 5"	77 lbs

*Type IA rated to 300 lbs

TYPE IAA

RATED TO 375 lbs



OSHA

- Fully braced steps and cross braces provides unmatched durability.
- Solid aluminum rivet construction at critical stress points is stronger than tubular steel rivets and results in a longer service life for your ladder.
- Side rail reinforcement sleeves at spreader connection points provide superior strength and durability.
- Our innovative Boot Shoe provides complete side rail protection and greater surface contact for increased slip resistance.
- A 20° climbing angle reduces worker fatigue and is more comfortable to climb than our competition's ladder.
- Compliance: ANSI A14.5/OSHA



SERIES 308

Step Ladder . Fiberglass

BETTER

Item #	Size	Base Width	Spread	Highest Standing Level	Weight
30803	3'	17 3/4"	26 1/2"	1'	14 lbs.
30804	4'	19 1/4"	34 1/2"	2'	16 lbs.
30805	5'	20 3/4"	42"	2' 9"	19 lbs.
30806	6'	22 1/4"	49 1/2"	3' 9"	23 lbs.
30807	7'	23 3/4"	58 1/2"	4' 7"	28 lbs.
30808	8'	25 1/4"	68 1/4"	5' 9"	32 lbs.
30810	10'	28 1/4"	86"	7' 6"	41 lbs.
30812	12'	31 1/4"	94"	9' 6"	49 lbs.

TYPE IAA

RATED TO 375 lbs



OSHA

- Each step is braced providing a strong and durable ladder
- Solid aluminum rivet construction at critical stress points is stronger than tubular steel rivets and results in a longer service life for your ladder.
- Our innovative, non-marring, Boot Shoe provides complete side rail protection and greater surface contact for increased slip resistance.
- A 20° climbing angle reduces worker fatigue and is more comfortable to climb than our competition's ladder.
- Compliance: ANSI A14.5/OSHA



SERIES 304

Step Ladder . Fiberglass

GOOD

Item #	Size	Base Width	Spread	Highest Standing Level	Weight
30402	2'	17 3/8"	21 3/8"	1' 11"	9 lbs
30403	3'	17 3/4"	26 1/2"	1'	13 lbs
30404	4'	19 1/4"	34 1/2"	2'	16 lbs
30405	5'	20 3/4"	42"	2' 9"	19 lbs
30406	6'	22 1/4"	49 1/2"	3' 9"	22 lbs
30408	8'	25 1/4"	68 1/4"	5' 9"	30 lbs
30410	10'	28 1/4"	86"	7' 6"	40 lbs
30412	12'	31 1/4"	94"	9' 6"	47 lbs

TYPE IA

RATED TO 300 lbs



OSHA

- Our most popular step ladder. A good mix of durability and affordability!
- Solid aluminum rivet construction at critical stress points is stronger than tubular steel rivets and results in a longer service life for your ladder.
- Our innovative, non-marring, Boot Shoe provides complete side rail protection and greater surface contact for increased slip resistance over competitive models.
- A 20° climbing angle reduces worker fatigue and is more comfortable to climb than our competition's ladder.
- Compliance: ANSI A14.5/OSHA



SERIES 352

Two-Way Step Ladder . Fiberglass

TYPE IAA RATED TO 375 lbs ANSI OSHA

Item #	Size	Base Width	Spread	Highest Standing Level	Weight
35202*	2'	19"	21 3/8"	23'	11 lbs
35203	3'	19"	21 3/8"	1'	19 lbs
35204	4'	20 1/2"	40"	2'	23 lbs
35205	5'	22"	48 1/2"	2' 9"	27 lbs
35206	6'	23 1/2"	53 3/4"	3' 9"	32 lbs
35208	8'	26 1/2"	70 1/2"	5' 9"	42 lbs
36210	10'	29 1/2"	89 3/4"	7' 6"	55 lbs
35212	12'	32 1/2"	105 3/4"	9' 6"	67 lbs
35214*	14'	35 1/2"	122"	11' 6"	86 lbs
35216*	16'	38 1/2"	138 3/4"	13' 5"	101 lbs

*Type IA rated to 300 lbs



35202



35206

- Permits access from each side or two workers at one time (one on each side).
- Every step is fully braced for added strength and durability.
- Our innovative Boot Shoes provide complete side rail protection and greater surface contact for increased slip resistance.
- Spreader reinforcement sleeves at connection points to the side rail provide superior strength and durability.
- A 20° climbing angle reduces worker fatigue and is more comfortable to climb than our competition's ladder.
- Compliance: ANSI A14.5/OSHA

SERIES 354

Two-way Step Ladder . Fiberglass

- Permits access from each side or two workers at one time (one on each side).
- Solid aluminum rivet construction at critical stress points is stronger than tubular steel rivets and results in a longer service life for your ladder.
- Our innovative Boot Shoes provide complete side rail protection and greater surface contact for increased slip resistance over competitive models.
- A 20° climbing angle reduces worker fatigue and is more comfortable to climb than our competition's ladder.
- 35400 step stool features extended side rails to allow for safer use as support for a walk plank.
- Compliance: ANSI A14.5/OSHA

TYPE IA RATED TO 300 lbs ANSI OSHA

Item #	Size	Base Width	Spread	Highest Standing Level	Weight
35400	2'	17 3/8"	21 3/8"	1' 11"	12 lbs
35404	4'	20 1/2"	40"	2'	23 lbs
35405	5'	22"	48 1/2"	2' 9"	27 lbs
35406	6'	23 1/2"	53 3/4"	3' 9"	31 lbs
35408	8'	26 1/2"	70 1/2"	5' 9"	40 lbs
35410	10'	29 1/2"	89 3/4"	7' 6"	52 lbs
35412	12'	32 1/2"	105 3/4"	9' 6"	63 lbs



35400



35406

SERIES 351

Platform Ladder . Fiberglass



35106



TYPE IAA

RATED TO
375 lbs



- Safer and more comfortable when working at repetitive heights
- Uniquely designed, durable top cap holds tools, fasteners, and small parts while hugging the user's legs
- Solid aluminum rivet construction at critical stress points is stronger than tubular steel rivets and results in a longer service life for your ladder.
- Our innovative Boot Shoes provide complete side rail protection and greater surface contact for increased slip resistance.
- A 215 sq. in. heavy gauge steel platform with safety tread offers maximum comfort and strength.
- Compliance: ANSI A14.5/OSHA

Item #	Overall Height	Platform Height	Base Width	Spread	Weight
35104	4'	1' 10"	23"	31"	27 lbs
35105	5'	2' 9"	25"	36 ½"	30 lbs
35106	6'	3' 8"	26"	42 ¾"	34 lbs
35107	7'	4' 7"	27 ½"	48 ½"	37 lbs
35108	8'	5' 7"	29"	54 ½"	41 lbs
35110	10'	7' 5"	32"	65"	55 lbs
35112*	12'	9' 4"	35"	77 ½"	64 lbs
35114*	14'	11' 3"	38"	88 ½"	79 lbs

*Type IA rated to 300 lbs

SERIES 201

Aluminum Step Ladders



TYPE IA **RATED TO 300 lbs**

Item #	Size	Base Width	Spread	Highest Standing Level	Weight
20104	4'	20 1/2"	21 3/8"	2'	14 lbs
20105	5'	22"	44 3/4"	2'9"	17 lbs
20106	6'	23 1/2"	51 3/4"	3'9"	20 lbs
20108	8'	26 1/2"	65 1/2"	5'9"	29 lbs
20110	10'	29 1/2"	80"	7'6"	38 lbs
20112	12'	32 1/2"	95 1/2"	9'6"	44 lbs
20114	14'	35 1/2"	105 1/2"	11'6"	53 lbs
20116	16'	38 1/2"	116 1/2"	13'6"	63 lbs

- Heavy gauge, but light-weight aluminum one way step ladder.
- Double braced bottom step for added durability.
- Molded top cap easily accommodates tools and fasteners.
- Compliance ANSI A14.2/OSHA



SERIES 200

Aluminum Two-Way Step Ladders

TYPE IA **RATED TO 300 lbs**

Item #	Size	Base Width	Spread	Highest Standing Level	Weight
20004	4'	20 1/2"	40"	2'	21 lbs
20005	5'	22"	48 1/2"	2'9"	25 lbs
20006	6'	23 1/2"	53 3/4"	3'9"	29 lbs
20008	8'	26 1/2"	70 1/2"	5'9"	38 lbs
20010	10'	29 1/2"	89 3/4"	7'6"	50 lbs
20012	12'	32 1/2"	105 3/4"	9'6"	62 lbs
20014	14'	35 1/2"	122"	11'6"	75 lbs
20016	16'	38 1/2"	138 3/4"	13'5"	87 lbs

- Permits access from each side or two workers at one time (one on each side).
- Heavy gauge, but light-weight weight aluminum side rails.
- Durable, aluminum hinged top for added strength.
- Double braced bottom steps provide added durability.
- Compliance ANSI A14.2/OSHA



SERIES 204

Aluminum Platform Ladders

TYPE IAA **RATED TO 375 lbs**

Item #	Overall Height	Platform Height	Base Width	Spread	Weight
20404	4'	1'9"	23"	31"	26 lbs
20406	6'	3'9"	26"	42 3/4"	31 lbs
20408	8'	5'9"	29"	54 1/2"	38 lbs
20410	10'	7'6"	32"	65"	49 lbs
20412*	12'	9'6"	35"	77 1/2"	58 lbs

*Type IA rated to 300 lbs

- Safer and more comfortable when working at repetitive heights.
- Uniquely designed, durable top cap holds tools, fasteners and small parts while hugging the user's legs
- Large platform with safety tread provides a comfortable, safe surface to work from.
- Compliance ANSI A14.2/OSHA



SERIES 315

Extension . Fiberglass

Type IAA 375 lbs rated



Item #	Size	Base Width	Extended Length	Highest Standing Level	Weight
31516	16'	17 3/4"	13'	9' 6"	42 lbs
31520	20'	17 3/4"	17'	13' 6"	51 lbs
31524	24'	17 3/4"	21'	17' 6"	60 lbs
31528	28'	17 3/4"	25'	21' 6"	68 lbs
31532	32'	17 3/4"	29'	25' 6"	77 lbs

Type IA 300 lbs rated

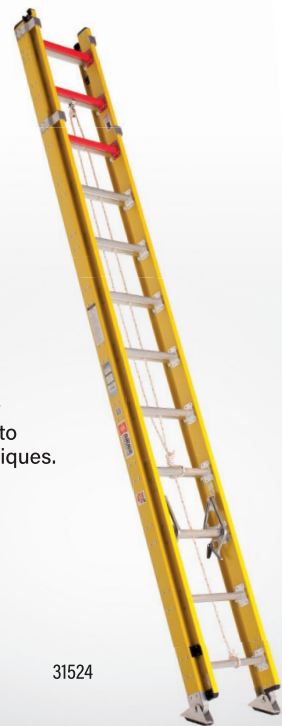
31536	36'	18 7/8"	32'	28' 6"	107 lbs
31540	40'	18 7/8"	35'	31' 6"	116 lbs

Type I 250 lbs rated

31544	44'	18 7/8"	39'	35' 6"	133 lbs
31548	48'	18 7/8"	43'	39' 6"	145 lbs

- Safety red rungs means highest standing level is clearly defined and has never been easier to determine. It's easy don't stand on red!
- A target label designates the center-point for the weight of the ladder so the user knows where to grab the ladder to transport it safely: promoting safe handling/lifting techniques.
- Light-weight but durable aluminum two-way shoes with rubber tread/spike shoes.
- Serrated aluminum D-shaped rungs provide grip and added comfort. Rungs are riveted to side rails.
- Larger 3/8" diameter rope with wear indicator is much easier on the user's hands than the competition's. (16' size does not include rope & pulley system)
- Compliance: ANSI A14.5/OSHA

31524



SERIES 310

Extension . Fiberglass

TYPE IA

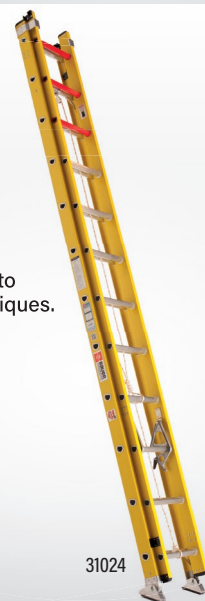
RATED TO 300 lbs



Item #	Size	Base Width	Extended Length	Highest Standing Level	Weight
31016	16'	17 1/4"	13'	9' 6"	37 lbs
31020	20'	17 1/4"	17'	13' 6"	44 lbs
31024	24'	17 1/4"	21'	17' 6"	52 lbs
31028	28'	17 1/4"	25'	21' 6"	60 lbs
31032	32'	17 1/4"	29'	25' 6"	68 lbs
32236	36'	17 1/4"	29'	25' 6"	80 lbs
32240	40'	17 1/4"	33'	29' 6"	89 lbs

- Safety red rungs means highest standing level is clearly defined and has never been easier to determine. It's easy don't stand on red!
- A target label designates the center-point for the weight of the ladder so the user knows where to grab the ladder to transport it safely: promoting safe handling/lifting techniques.
- Light-weight but durable aluminum two-way shoes with rubber tread/spike shoes.
- Serrated aluminum D-shaped rungs provide grip and added comfort.
- Larger 3/8" diameter rope with wear indicator is much easier on the user's hands than the competition's. (16' size does not include rope & pulley system)
- Compliance: ANSI A14.5/OSHA

31024



SERIES 221

Extension . Aluminum

TYPE IA

RATED TO 300 lbs



Item #	Size	Base Width	Extended Length	Highest Standing Level	Weight
22116	16'	18 1/4"	13'	9' 6"	35 lbs
22120	20'	18 1/4"	17'	13' 6"	42 lbs
22124	24'	18 1/4"	21'	17' 6"	49 lbs
22128	28'	18 1/4"	25'	21' 6"	57 lbs
22132	32'	18 1/4"	29'	25' 6"	76 lbs
22136	36'	18 1/4"	32'	28' 6"	85 lbs
22140	40'	18 1/4"	35'	31' 6"	92 lbs

- A bullseye label designates the center-point for the weight of the ladder: promoting safe handling/lifting techniques
- Serrated aluminum D-rungs provide grip and added comfort.
- Upgraded rope is more comfortable and easier to use than the competitors. 16' size does not include rope & pulley system
- Compliance ANSI A14.2/OSHA

22124



SERIES 314

Separable Extension/Single Section . Fiberglass



FEATURES

- Versatile ladder that can be used as an extension ladder or single section straight ladder. Rounded hoop style shoes on the fly section allow it to be safely used as single section straight ladder.
- Safety red rungs means highest standing level is clearly defined and has never been easier to determine. It's easy don't stand on red!
- A target label designates the center-point for the weight of the ladder so the user knows where to grab the ladder to transport it safely: promoting safe handling/lifting techniques.
- Light-weight, but durable aluminum two-way swivel shoes have suction cup rubber treads and also spikes for soft ground.
- Serrated aluminum D-shaped rungs provide grip and added comfort. Rungs are riveted to side rails.
- Larger 3/8" diameter rope with wear indicator is much easier on the user's hands than the competition's rope. (16' size does not include rope & pulley system)
- Compliance: ANSI A14.5/OSHA

TYPE IAA

RATED TO
375 lbs



Item #	Size	Single Size	Base Width	Extended Length	Highest Standing Level	Weight
31416	16'	8'	17 3/4"	13'	9' 6"	41 lbs
31420	20'	10'	17 3/4"	17'	13' 6"	50 lbs
31424	24'	12'	17 3/4"	21'	17' 6"	59 lbs
31428	28'	14'	17 3/4"	25'	21' 6"	66 lbs
31432	32'	16'	17 3/4"	29'	25' 6"	73 lbs

SERIES 200



Sawhorse . Aluminum

- Heavy gauge aluminum rails, top, hinges, and double braced bottom steps provide a sturdy, durable sawhorse that is built to last.
- Permits access from two sides or two workers at one time (one on each side).
- Solid aluminum rivet construction at critical stress points provides a stronger sawhorse with a longer service life.
- Compliance ANSI A14.2/OSHA



Item #	Size	Top Width	Base Width	Spread	Highest Standing Level	Weight
20052	2'	30"	33"	23"	23"	19 lbs
20053	3'	30"	35"	31"	1'	25 lbs
20054	4'	30"	37"	40"	2'	31 lbs



20054

20900 FOLD-N-GO

Work Platform . Aluminum



- Easy to Transport - Folding legs that latch in place and a comfortable carrying handle make this work platform easy to maneuver and transport.
- 60 1/4" long by 22 3/4" wide slip resistant platform is perfect for side to side jobs and two person applications.
- Compliance ANSI A14.2/OSHA



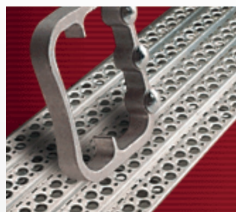
Item #	Size	Highest Standing Level	Weight
20090	2'	1' 9"	34 lbs



PLANKS AND STAGES

DESIGN FEATURES

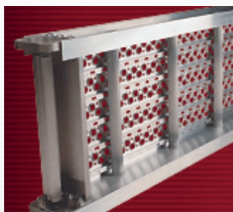
These rugged, high-strength aluminum planks and stages are ideal for use with pump jack systems or as catwalks over or under I-beams, pits, tanks, and machinery. They can also be used in ship building and maintenance and traditional building maintenance. Important design features make Bauer Aluminum Planks & Stages safer, more durable, flexible, and productive equipment for reaching your work.



Raised tread with open pattern provides slip-resistant surface.



Rigid I-beam side rails provide best strength/weight/cost relationship.



D-rung cross bracing provides superior deck support.



Staggered rail handles permit continuous end to end positioning.



Connectors, sold separately (for 4" deep planks part# 08430; 6" deep planks part# 08432), interlock platforms to prevent separation.

Guard Rail Kit One Side*

Item #	Length	Weight
Four Inch Side Rails		
08202	12 Ft	30 lbs
08204	16 Ft	35 lbs
08206	20 Ft	43 lbs
08208	24 Ft	49 lbs
Six Inch Side Rails		
08210	20 Ft	35 lbs
08212	24 Ft	49 lbs
08214	28 Ft	63 lbs
08216	30 Ft	77 lbs
08218	32 Ft	91 lbs

* Requires 2 kits for 2 sides

Guard Rail Kit One End*

Item #	Width	Weight
Four Inch Side Rails		
08220	12 in	3 lbs
08222	14 in	3 lbs
08224	20 in	4 lbs
08226	24 in	4 lbs
08228	28 in	5 lbs

* Requires 2 kits for 2 sides

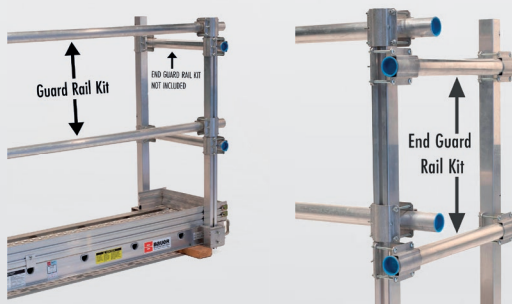
Return Post Kit*

Part Number	Wt.
08402	5 lbs

* Required only when one side rail kit is used with an end rail.

MODULAR GUARD RAIL SYSTEMS

Bauer guard rail systems are available as complete kits or individual parts. Selection of the proper kit part number is based on the following plank or stage dimensions: size of the side rail (4" or 6"), length, and width.



MODULAR TOE BOARD SYSTEMS

Toe board systems are available as complete kits or individual parts. Toe board systems are either "dependent," requiring guard rail systems for attachment, or "independent," attaching directly to the plank or stage without guard rails. Toe board kits are supplied as side and end units in 4" and 6" heights. Each kit includes all the necessary components for installation.

Dependent Toe Board Kit One Side*

Item #	Length	Weight
Four Inch Toe Board		
08230	8 Ft	9 lbs
08232	12 Ft	13 lbs
08234	16 Ft	17 lbs
08236	20 Ft	21 lbs
08238	24 Ft	25 lbs
08240	28 Ft	29 lbs
08242	30 Ft	31 lbs
08244	32 Ft	33 lbs

* Requires 2 kits for 2 sides

Dependent Toe Board Kit One Side*

Item #	Length	Weight
Six Inch Toe Board		
08246	8 Ft	11 lbs
08248	12 Ft	15 lbs
08250	16 Ft	19 lbs
08252	20 Ft	23 lbs
08254	24 Ft	27 lbs
08256	28 Ft	31 lbs
08258	30 Ft	33 lbs
08260	32 Ft	35 lbs

* Requires 2 kits for 2 sides

Dependent Toe Board Kit One End*

4" Item #	6" Item #	Length	Weight
Four and Six Inch Toe Board			
08262	08272	12 in	2 lbs
08264	08274	14 in	2 lbs
08266	08276	20 in	2 lbs
08268	08278	24 in	3 lbs
08270	08280	28 in	3 lbs

* Requires 2 kits for 2 sides

Independent Toe Board Kit One Side 4" Rail*

4" Item #	6" Item #	Length	Weight
Four and Six Inch Toe Board			
08282	08298	8 Ft	9 lbs
08284	08300	12 Ft	13 lbs
08286	08302	16 Ft	17 lbs
08288	08304	20 Ft	21 lbs
08290	08306	24 Ft	25 lbs

* Requires 2 kits for 2 sides

1 ManRATED TO
250 lbs

Length	12" wide			14" wide			20" wide		
	Item #	Side Rail	Weight	Item #	Side Rail	Weight	Item #	Side Rail	Weight
8'	20220	4"	28 lbs	20230	4"	31 lbs	20250	4"	38 lbs
12'	20222	4"	40 lbs	20232	4"	44 lbs	20252	4"	55 lbs
16'	20224	4"	52 lbs	20234	4"	58 lbs	20254	4"	71 lbs
20'	20226	4"	64 lbs	20236	4"	71 lbs	20256	4"	87 lbs
24'	20228	4"	89 lbs	20238	4"	97 lbs	20258	4"	116 lbs

2 ManRATED TO
500 lbs

Length	12" wide			14" wide			20" wide		
	Item #	Side Rail	Weight	Item #	Side Rail	Weight	Item #	Side Rail	Weight
8'	21006	4"	28 lbs	21030	4"	31 lbs	22010	4"	38 lbs
12'	21008	4"	46 lbs	20132	4"	52 lbs	22012	4"	61 lbs
16'	21010	4"	61 lbs	20134	4"	66 lbs	22014	4"	79 lbs
20'	21012	6"	80 lbs	20136	6"	88 lbs	22016	6"	106 lbs
24'	21014	6"	95 lbs	20138	6"	105 lbs	22018	6"	126 lbs
28'	21016	6"	110 lbs	20140	6"	121 lbs	22020	6"	146 lbs
30'	21018	6"	118 lbs	20142	6"	130 lbs	22022	6"	158 lbs
32'	21020	6"	125 lbs	20144	6"	136 lbs	22024	6"	166 lbs

Length	24" wide			28" wide		
	Item #	Side Rail	Weight	Item #	Side Rail	Weight
8'	22040	4"	41 lbs	22070	4"	47 lbs
12'	22042	4"	66 lbs	22072	4"	72 lbs
16'	22044	4"	86 lbs	22074	4"	94 lbs
20'	22046	6"	116 lbs	22076	6"	126 lbs
24'	22048	6"	138 lbs	22078	6"	150 lbs
28'	22050	6"	160 lbs	22080	6"	174 lbs
30'	22052	6"	173 lbs	22082	6"	179 lbs
32'	22054	6"	182 lbs	22084	6"	189 lbs
36'	22056	6"	204 lbs	22086	6"	209 lbs
40'	22058	6"	226 lbs	22088	6"	230 lbs

3 ManRATED TO
750 lbs

Length	20" wide			24" wide			28" wide		
	Item #	Side Rail	Weight	Item #	Side Rail	Weight	Item #	Side Rail	Weight
16'	23014	6"	86 lbs	23044	6"	94 lbs	23074	6"	102 lbs
20'	23016	6"	106 lbs	23046	6"	116 lbs	23076	6"	126 lbs
24'	23018	6"	126 lbs	23048	6"	138 lbs	23078	6"	150 lbs
28'	23020	6"	161 lbs	23050	6"	175 lbs	23080	6"	189 lbs
30'	23022	6"	174 lbs	23052	6"	189 lbs	23082	6"	196 lbs
32'	23024	6"	183 lbs	23054	6"	199 lbs	23084	6"	206 lbs
36'	23026	6"	223 lbs	23056	6"	241 lbs	23086	6"	252 lbs
40'	23028	6"	248 lbs	23058	6"	268 lbs	23088	6"	280 lbs



Bauer
LADDERS
USA MADE • PROFESSIONAL GRADE

2540 Progress Drive, Wooster, OH 44691
330-262-3070 www.bauerladder.com



USA Made

- Since 1917 -

Professional Grade

